

## 17\_07 Hearing Map Rasters and PDF Creation

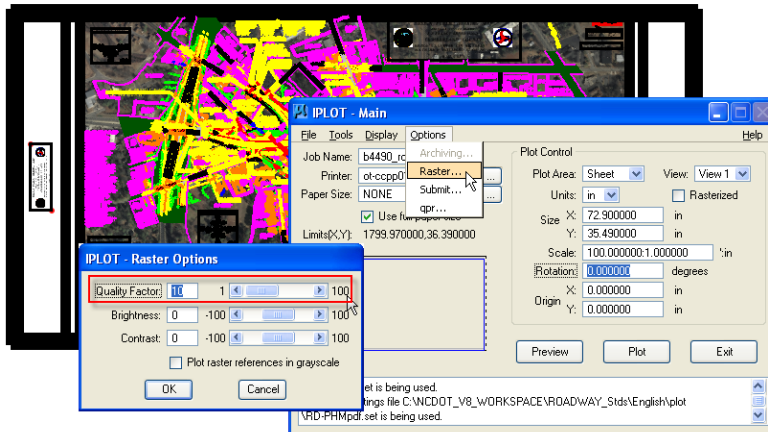
### Question:

I am having problems plotting a hearing map with an aerial background and creating the PDF for it? What can I do?

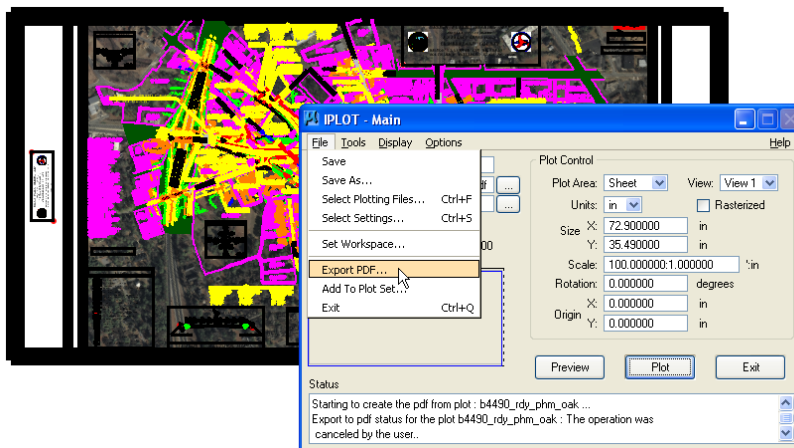
### Answer:

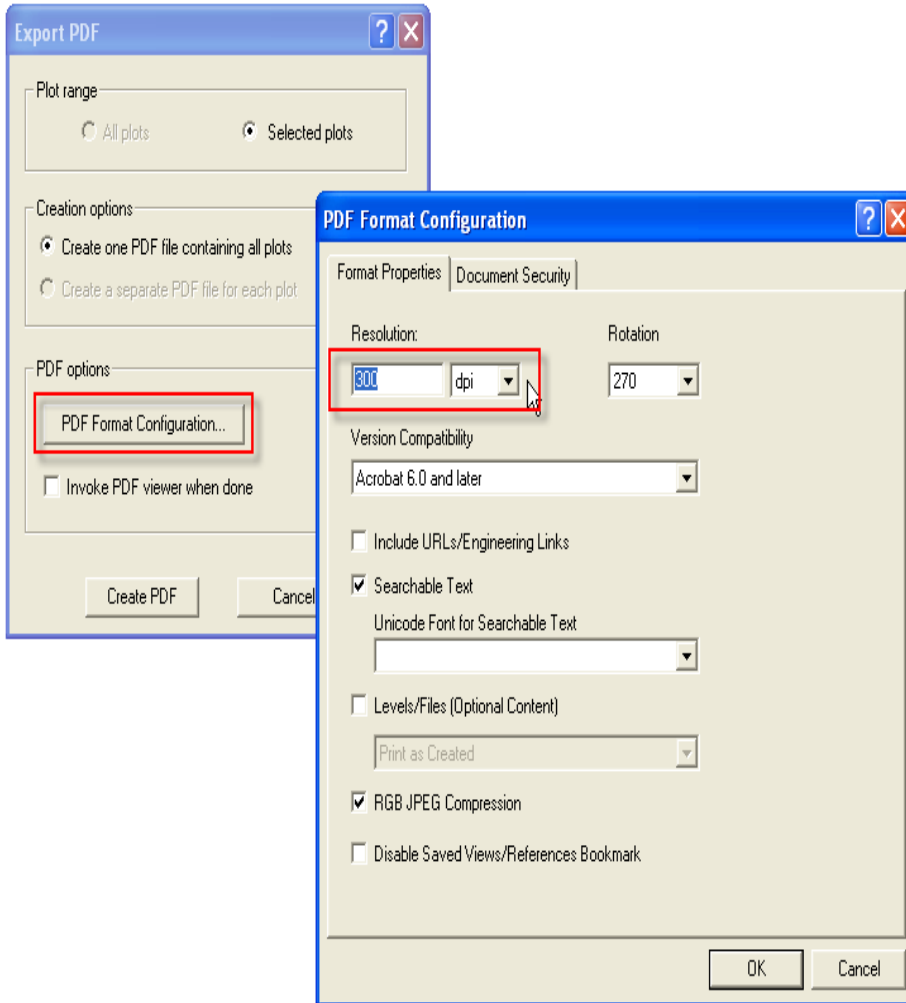
Queuing a large file size for printing or PDF creation can be a problem, especially if an aerial photo/raster is in the background. To reduce the file size in the iPlot dialog box, try these two helpful tips:

1. Reduce the Quality Factor of the raster to an index value of 10.



2. For PDF creation, reduce the Resolution from 600 DPI to 300 DPI.





Note the file size difference between the default settings (unplottable and hangs up the PC) to something fairly small and without any noticeable loss in print quality.

b4490_rdy_phm.dgn	3,680 KB
b4490_rdy_phm.pdf	35,820 KB
b4490_rdy_phm_oak.dgn	3,680 KB
b4490_rdy_phm_oak.pdf	4,238 KB

Also note when creating hearing maps in PDF format to be posted on Roadway's public webpage, try to keep them to be less than 10 MB (10,000 KB) . Any PDF's greater than 10 MB will have to be either FTS to the recipient (note on hearing map webpage for contact info) or get special approval to be stored on the web server for immediate download. Please see us if you are having difficulties making hearing map

**PDF's less than 10 MB.**